

#0000107

NATIONAL LYMPHEDEMA NETWORK

NLN



LYMPH Link

Vol. 12, No. 3 July ~ Sept. 2000

ISSN 1065-9951

Editor: MITCHELLE TANNER
Managing Editor: SASKIA R.J. THIADENS, R.N.
Graphic Artist: MARCIA KRUSE
Cathedral City, California

NATIONAL LYMPHEDEMA NETWORK
Latham Square
1611 Telegraph Avenue, Suite 1111
Oakland, CA 94612-2158
Telephone 510-208-3200
Website www.lymphnet.org
Email nlnc@lymphnet.org

The NLN Mission Statement

To achieve these goals, the NLN disseminates information about lymphedema to health care professionals so they can appropriately counsel their patients on its avoidance, and prescribe safe, effective treatment for those affected by this condition. The NLN also provides this information to the general public.

Lymph Drainage Therapy (LDT): "Manual Lymphatic Mapping" And Its Clinical Applications To Lymphedema

By Bruno Chikly, MD (France)

↓
M21 500

Manual Lymphatic Mapping (MLM) is one of the most recent advances in the techniques used to specifically improve or restore the natural lymphatic drainage of the body. Based on current scientific information, this new technique enables trained practitioners to work with greater precision by manually assessing the specific direction of lymphatic circulation.

practitioners assess alternative pathways to promote drainage of areas of interstitial fluid or lymphatic stagnation.

WHAT IS LYMPHATIC RHYTHM?

To understand what causes the lymphatic rhythm, we must first look at the anatomy and physiology of the lymphatic system. The system is composed of lymph capillaries (or initial lymphatics) which carry fluid from interstitial spaces to pre-collectors, which then convey it to larger vessels called lymph collectors. These collectors are approximately 100 to 600 microns in diameter and consist primarily of chains of muscular units called "lymphangions. Possessing bicuspid valves (having two leaflets) lymphangions (the correct plural is actually "lymphangia") have been described as little "lymphatic hearts" (Mislin, 1961). Working much like the body's heart pacemakers, the lymphangions contract regularly throughout the lymphatic system (lymphangiomotoricity), moving lymph in peristaltic waves. From the tunica media to the tunica externa, these muscular units have extensive sympathetic and

HISTORICAL BACKGROUND

Specific lymphatic drainage techniques have come into use during the past 75 years. Osteopath F. P. Millard deserves credit for developing the first precise manual approach to the lymphatic system. Beginning in 1904, Millard conducted extensive lymphatic studies, the results of which he published in "Applied Anatomy of the Lymphatics" in 1922. In his writings, Millard used the term "lymphatic drainage" to describe his techniques.

Emil Vodder, a Danish practitioner and doctor of philosophy, is best known for his brilliant insights into techniques for enhancing lymphatic circulation. Between 1932 and 1936, in Cannes, France, Vodder and his wife developed a specific manual technique for lymph drainage. But because he was not a physician, physical therapist or massage therapist (in France, the practice of massage therapy is restricted to registered physical therapists), he had difficulty authenticating and gaining recognition for his technique. It was not until the end of the 1960s that Vodder's Manual Lymph Drainage technique was scientifically tested and its effects recognized.

More recently, I myself, a trained French physician, further improved on some of these techniques by developing ways to manually assess the specific rhythm, direction, depth and quality of the lymphatic flow. This approach, Lymph Drainage Therapy (LDT), also uses the technique called Manual Lymphatic Mapping (MLM), which helps

Continued on page 2

In This Issue

PRESIDENT'S MESSAGE	4
LE D-DAY HONOREES 2000	8
THE VIRTUAL CLINIC FOR LE	11
NEWS & NOTES	13
TAKING ACTION	15
QUESTION CORNER	17
1999 NLN ANNUAL REPORT	19
RESOURCE GUIDE	21
SUPPORT GROUPS	26
EDUCATION CORNER	28

parasympathetic innervation, somewhat similar to the alpha and beta receptors found in blood vessels.

CONTRACTILITY OF THE LYMPHANGIONS

The first observations of lymphangion contractility were made in animals by such anatomists as Hewson, Heller, Lieben, Florey, and Pullinger. Other researchers published their descriptions of lymphatic vessel contractility in humans (Kinmonth, Smith, Szegvari).

Waldemar L. Olszewski is credited with doing the first studies involving specific measurement of lymphatic vessel contractility in man. One of his many published reports concerned the results of cannulation of lymph vessels in five healthy male volunteers. Olszewski recorded a lymphatic rhythm of 6-8 contractions per minute creating a pressure of 1 to 33 mm/Hg. Other researchers reported similar results (Schmid-Schönbein, Sjöberg, Zawieja). For example, Guo-Ying Wang and Shi-Zhen Zhong in China concluded that the lymphatics contract at an average of 4.89 times per minute with a variation of ± 1.03 times per minute.

Confirmation of the contractility of lymphatic vessels has definite clinical implications. First, practitioners of lymphatic drainage should not consider lymph to be a passive medium and try to push it, like toothpaste from a tube, as some schools still teach. Since the lymphangion is made up of autonomic smooth muscles having automotoricity, the techniques used should stimulate their natural contractions. It also may be necessary, through touch, to re-educate the regular contraction of these muscles if they have slowed down or stopped working due to edema, trauma, lack of exercise, aging, very cold conditions or use of certain drugs.

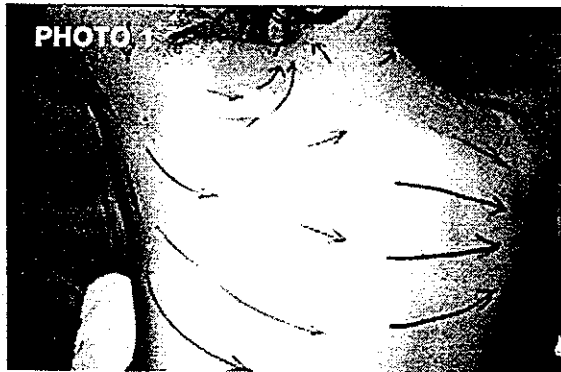
The hand pressure should be just enough to stimulate reabsorption and the automotoricity of the lymphangions. The pressure should not be so heavy as to increase blood capillary filtration; such an increase tends to be counterproductive in cases of edema or lymphedema. It has been calculated that more than 30-40 mm Hg of pressure can cause

collapse of the lymphatic vessels. The ideal hand pressure generally is (0.5 to 2 oz.)/cm², which is about 4 to 8 oz. per square inch. Therefore, this method of lymph drainage often obliges the therapist to change his/her concepts of touch.

MANUAL LYMPHATIC MAPPING (MLM) AND ITS CLINICAL APPLICATIONS

Manual Lymphatic Mapping is a non-invasive method by means of which trained practitioners, using only their hands, can identify the specific direction of the deep or superficial lymphatic circulation on an affected or unaffected area of a patient.

In cases of post-mastectomy upper extremity lymphedema it has been noted, for example, that lymph flow can choose between some twenty alternate pathways to reroute toward an unaffected lymph territory (lymphotome), including anterior and posterior pathways toward the unaffected axilla,



inguinals, clavicles, intercostals, Mascagni's pathways, vasa-vasorum and other special reroutes. It may be difficult for a manual practitioner to "guess" or assume which pathway will be taken by the lymph flow, and sometimes wrong assumptions can cause a significant loss of time and resources.

Manual Lymphatic Mapping enables

trained practitioners to work at a high level of precision by manually assessing the direction of lymphatic circulation and finding more specifically the alternate pathway preferred by lymph/interstitial fluid in case of lymph circulation obstruction (Photos 1 and 2).

MLM also allows the therapist to work more accurately with the natural anatomical variations in the lymphatic system of their patients. Information about the direction and contractility of superficial and deep lymphatic circulation has definite clinical implications:

1) Identification of the specific directions of the lymphatic circulation, identification of the areas of fluid restriction and fibrosis.

As an assessment tool, manual lymphatic mapping can help assess the effects of lymphatic drainage by evaluating the patient before, during and after the sessions (Photo 2 and 3):

- Before the session, mapping is used to make an initial assessment of the areas of fluid restriction, stagnation and

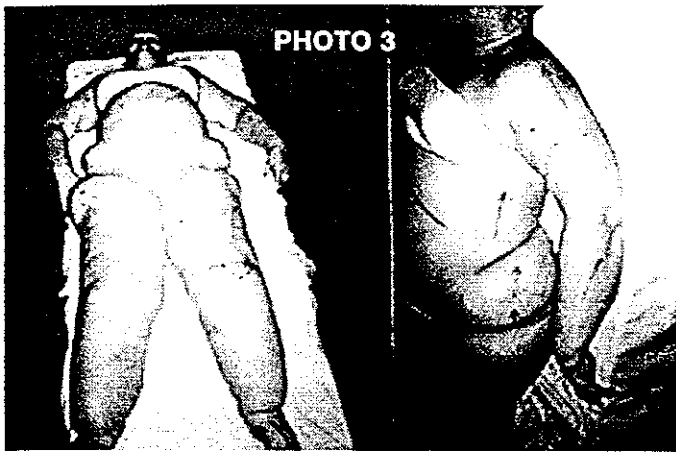
fibrotic tissue;

- During the session, the therapist can determine whether the most appropriate area to work has been selected and how efficiently the lymph flow has been stimulated or rerouted;

- After the session, mapping is used to verify the results of the technique, to check the areas of initial restriction, and to fine-tune sites that require further attention;

Under medical compression, for the advanced therapist, MLM does not have to be done on the bare skin; it can also be done through bandaging and

all kinds of medical compressions to help determine whether the reroute of fluid under the compression is consistent with the pathway determined and encouraged by the therapist. If not, the compression can be re-applied. A proper compression is essential for optimal effectiveness, comfort and patient compliance.



- 2) Description of the new "pathological watershed."
- 3) Identification of the various alternative pathways used by the lymphatic/interstitial fluid circulation and identification of the most efficient alternate pathways toward a healthy lymphotome.
- 4) Selection of a physical treatment protocol.
- 5) Preventative application (subclinical lymphedema): Evaluation of functional alternate pathways or area of stagnation in lymphedema latent phases of lymphedema (Photo 1).
- 6) Preventative Lymph Drainage Therapy with evacuation toward most efficient alternate lymphatic / interstitial fluid pathways.

STUDYING THE MLM TECHNIQUE

Manually assessing the lymphatic rhythm and direction requires time and dedication. Without previous training it may seem totally impossible to feel such a subtle component of the lymph circulation. We recommend that therapists new to this method first develop their skills for assessing the rhythm of the lymphatic flow. With training and practice, most are able to attain the sensitivity required to evaluate the rhythm, and then are able to determine the specific direction of lymphatic flow. In the author's experience, more than 90 percent of participants in the second-level training workshop are able to meet the challenge of manually finding the specific lymphatic pathways in an unknown lymph territory or lymphotome.

In addition, students consistently find the same answers. These answers are consistent with superficial or deep lymphatic circulation as shown on anatomical charts. While the technical means for measuring the accuracy of patient mapping in a non-invasive and scientific way are

not yet available as of the writing of this article, some investigations are currently underway using protocols to help measure and document this technique.

CLINICAL APPLICATIONS OF MANUAL LYMPHATIC MAPPING

To clarify how the lymphatic mapping technique is used on patients, I will present a few case examples.

The first is of a 38-year-old woman who had a lumpectomy for a right breast carcinoma of 1 cm, grade 1. The patient had axillary node dissection (level 1 and 2) with 11 nodes removed. All nodes tested negative for cancer. Surgery was followed by radiation therapy for two months.

While the patient did not display symptoms of clinical lymphedema and had not been treated with Complex Decongestive Physiotherapy (CDP), she was concerned about the risk of developing the condition and unclear about what exercise she could do safely.

In Photo 1, the direction of the lymphatic flow was determined by Manual Lymphatic Mapping. The arrows indicate the patient's spontaneous "rerouting" of her lymphatic circulation after surgery and radiation therapy. Initial findings revealed that the superficial lymph circulation of her upper extremity was diverging and avoiding the axillary region (not shown). This was an adaptation to an abnormal condition (the absence of many of her axillary lymph nodes); physiologic pathways of the upper extremity lymph circulation should all converge towards the axilla.

The post-surgical rerouting of the lymphatic circulation as seen in Photo 1, follows two main "alternative pathways":

A — Clavicular pathways, as represented by numerous arrows, avoid the axilla and make a wide curve from the upper extremity and shoulder to the clavicle.

B — Dorsal pathways that cross the posterior sagittal (midline) watershed; these are to be evacuated through the contralateral (opposite side) posterior upper quadrant lymphotome, which ultimately drains to the unaffected axilla.

In summary, this patient seems to have no major blockage of the superficial circulation at this point and no objective signs of edema. The lymph has rerouted naturally and efficiently, as it does in the 70 to 85 percent of post-mastectomy/post-radiationtherapy patients who do not develop lymphedema. Moderate exercise seems indicated for this patient and a follow-up assessment may be recommended approximately every 6 months to one year to observe the evolution of the lymphatic alternative pathways.

In Photo 2, the patient illustrates a very different situation. This patient, age 36, had a mastectomy in April 1996 with axillary node dissection. Of the 13 nodes removed, three tested positive for cancer. Further treatment included four cycles of chemotherapy and 33 radiation treatments. An episode of cellulitis required hospitalization and was treated successfully with antibiotics. The patient displayed very minor symptoms of clinical lymphedema in the forearm.

The lymphatic mapping as seen in Photo 2 shows that the lymphatic drainage continues to converge toward the axilla and a strong flow can be mapped going through the axillary fascia. There is one superior lymphatic pathway starting to reroute and avoid the axilla, pioneering a new alternative lymphatic pathway. This rare case example illustrates that even after axillary dissection, chemotherapy and cellulitis, lymph can still attempt to follow the "path of least resistance" toward the axilla.

The initial objective of the practitioner after "mapping" the patient will be to gently encourage the lymph flow through

Continued on page 6

the fascia. In this specific case the lymphatic circulation is totally rerouted toward the axilla after the first session. Nearly all the lymphatic circulation of her upper extremity somehow finds its way through the fibrosis and fascia layers of her axilla, which is quite uncommon. At this time and in this specific case, efforts to reroute her lymphatic pathways do not seem necessary.

Recommended follow-up care is to check the patient regularly to ensure that the axillary fascia does not continue to become more fibrotic and hinder the lymph flow to the axilla in the future. The process of fibrosis development may, in some cases, continue independently for many years, as we have seen in some documented cases of benign lymphedema up to 30 years after surgery. If this occurs, a new, effective reroute will need to be found for lymph flow from the patient's upper extremity, chest and breast.

Photo 3 (page 3) illustrates how Manual Lymphatic Mapping can be used in assessing a most difficult case of

lymphedema. This patient has primary lymphedema affecting all four extremities. The Manual Lymphatic Mapping depicts the superficial flow of lymph. We note that the lymphatic drainage of the upper extremity veers away from the axillary nodes, rather than converging toward them as is seen in normal conditions. In this case it is mainly rerouting toward the clavicles, which are usually not a significant enough pathway to evacuate this extremity.

In the same way, the superficial lymphatic flow of the lower extremity is finding an alternative pathway toward a small group of thoracic nodes, close to the axilla. We also see in the front of the upper thigh the "new pathological watershed" (dotted line), the area from which lymph flows in opposite directions. The physiological watershed is usually located at the midline of the posterior thigh. This indicates, most probably, a significant blockage of the superior nodes of the upper extremity.

In treating lymphedema, the identification of the new "pathological watershed" is one of the tasks the therapist should perform, in order to

more easily assess the new specific reroutes taken by the lymph flow.

In Photo 4 (page 7), we find a case of local post-traumatic lymphedema, a common condition encountered by many therapists.

Nineteen years ago, the patient, while riding a bike, was hit by a car. The left side of her hip took the impact and she developed a severe chronic bursitis. This patient was seen during a seminar in front of a class of trainees. She initially presented with localized swelling and slight signs of inflammation without apparent fibrosis, local numbness in the upper thigh, minor pain during movement, pain during sleep that required her to sleep on the uninjured side of her body every night, slight skin discoloration and minor limitations in hip range of motion, with external rotation being most restricted.

The arrows in Photo 4 show the initial results of the Manual Lymphatic Mapping and the abnormal lymphatic pathways. The lymphatic pathways of her lateral upper thigh do not converge toward the inguinal nodes but reroute pathologically around the iliac crest. ➔



ACADEMY OF LYMPHATIC STUDIES

We offer certification classes throughout the year at convenient locations

We also offer 4-day Lymphedema Management Seminars

For class dates, a free brochure/registration form

Call **800-863-5935** (www.acols.com)

First School in the US Offering Lymphedema Certification Courses (since 1994)

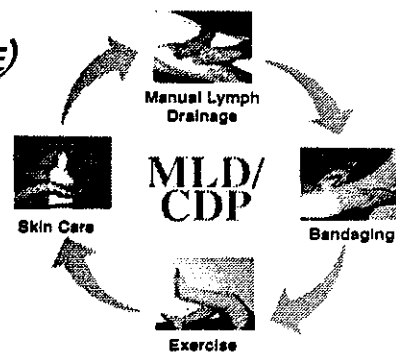
Certification Classes (135 hours) in:
MANUAL LYMPH DRAINAGE (VODDER/FÖLDI TECHNIQUE)
& COMPLETE DECONGESTIVE PHYSIOTHERAPY

Faculty:

Joachim E. Zuther

Certified Instructor in MLD/CDP with over 15 years of teaching experience, has trained more than 2000 therapists in the U.S. and Europe.

Expert Physician and Support Staff



About this course: Participants will be fully certified in all techniques of MLD/CDP. Small groups - special workshops (advanced measurements, billing, etc.) - certification for Elvarex and Juzo garment fitting - training videos - specialized educational tools, - after course support of therapists with patient problems - etc. The instructor is an active member of the International Society of Lymphology, member of the Medical Advisory Board of the National Lymphedema Network and the German Society of Lymphology. CEU's available.

If the lymphatic mapping of the patient is pathological, it indicates the presence of a lymphostatic edema = lymphedema. In this case it can be called a secondary post-traumatic lymphedema.

What is noteworthy about this case is that the tissues did not develop fibrosis even after 19 years of local edema. We expected this patient to respond quickly to Lymph Drainage Therapy.

Photo 5 was taken a few minutes after the treatment was administered.

We now see that the lymphatic pathways are rerouted toward the inguinal nodes. If the nodes are unaffected and the patient does not develop fibrotic tissue in the area, such as in this case, it is common and quite dramatic to see the lymph rerouting quickly toward physiological pathways.

"Normalization" of the local lymph circulation resulted in the disappearance of chronic swelling and inflammation. After five minutes, the patient reported a normalization of the skin color and decreased pain, discomfort and numbness. The patient declared that "it feels like it is my leg again. It hasn't felt quite normal all these years."

Upon assessing the range of motion in the limb, we found it had improved to within normal ranges. The day after the treatment, the patient reported that for the first time in 19 years she could sleep the whole night on the affected side without pain, paresthesia or discomfort.

The lymphatic circulation had found its pre-traumatic "path of least resistance." The patient had experienced no recurrence of her chronic condition in eight months of follow-up.

This case illustrates some of the possibilities for therapeutic intervention in lymphedema cases. In the event of post-surgical lymphedema or post-radiotherapeutic lymphedema with significant node dissection and/or with extensive fibrosis, we obviously cannot expect this kind of result. However, it is important to appreciate the way interstitial fluid can reroute and find

alternative pathways, and at times, as in this case, quite rapidly "normalize," dramatically improving the patient's condition.

CONCLUSION

As the case histories clearly illustrate, lymphedema is a very complex condition, wherein a one-size-fits-all approach is ineffective. The complexities are compounded by evidence that all

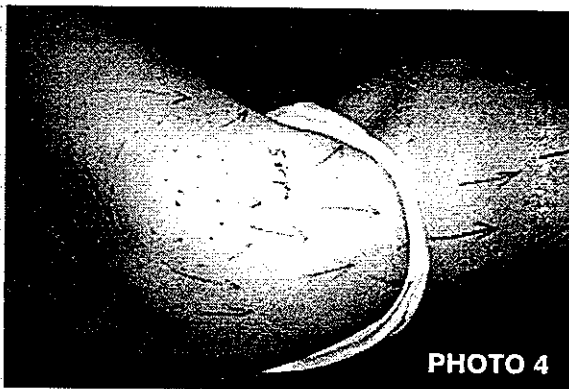


PHOTO 4

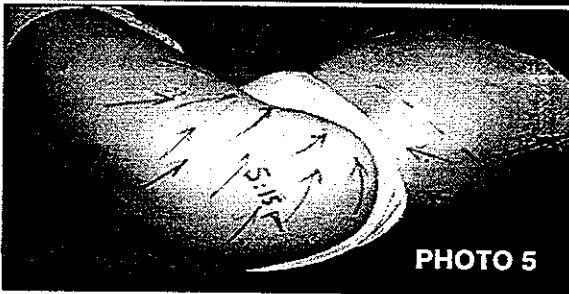


PHOTO 5

patients remain at risk for lymphedema for the rest of their lives and many complications can arise. Many types of lymphedema, even those of long duration, respond to conservative treatment, the first treatment of choice.

The refinement of the Manual Lymphatic Mapping techniques of Lymph Drainage Therapy offers the therapist an important tool for efficient management of lymphedema.

Bruno Chikly, MD, is a French physician trained in traditional medicine, lymphology and osteopathy. He earned the "Medal of the Medical Faculty of Paris VI" for his exhaustive research on the lymphatic system and lymph drainage technique. His findings became the basis for his development of Lymph Drainage Therapy, a lymphatic drainage technique.

References for this article can be found online at www.lymphnet.org/newsletter or call 510-208-3200 to request a faxed copy. □



Symbol
Of
Hope
For
Lymphedema
~ The
Butterfly

Symbolizing an emergence from the darkness of its cocoon into the daylight, the butterfly also represents the journey of lymphedema over the past 11 years — from complete obscurity to the gradual light of awareness that is beginning to shine on this largely unrecognized and under-treated epidemic. It is our hope that the butterfly (introduced by Jeanne Tassis, a lymphedema activist) and turquoise ribbon will enjoy universal recognition as the symbol for lymphedema awareness.

TO ORDER,
SEE NLN SPECIALTY ITEMS, PAGE 29

NLN



NLN® *Lymph Link* is published quarterly in January, April, July and October by the NATIONAL LYMPHEDEMA NETWORK

Latham Square
1611 Telegraph Avenue, Suite 1111
Oakland, CA 94612-2138
Telephone 510-208-3200
Website www.lymphnet.org
E-mail nln@lymphnet.org

Advertisements and copy to be considered for publication must be received no later than 45 days prior to the month of publication. For advertising rates, please call the NLN® at 510-208-3200, Monday-Friday, 9:30 A.M. to 5:00 P.M. (PST) to leave your request.

Please note that although all advertising material is expected to conform to ethical (medical) standards, inclusion in the NLN® *Lymph Link* does not constitute a guarantee or endorsement by the National Lymphedema Network of the quality or value of such product or service, or of the claim made of it by its manufacturer or owner.

The goal of this publication is to provide information specific to the needs of lymphedema patients and health care providers.

©2000 by the NLN®. All rights reserved. Reproduction in whole or in part without written permission from the publisher is prohibited. NLN® and the NLN® logo are registered trademarks of the National Lymphedema Network, Inc.

DEADLINE FOR OCTOBER-DECEMBER
2000 ISSUE OF THE NLN LYMPH LINK:

All copy, renewals and payments must be
received no later than
AUGUST 15, 2000 ~ 5:00 P.M. (PDT)

LYMPHEDEMA RESOURCE GUIDE

DISCLAIMER: The following listing constitutes neither an accreditation nor an endorsement by the NLN® or the NLN® Medical Advisory Committee. At the present time, no standards have been set in the U.S. for treatment of lymphedema, certification of professionals in this field or accreditation of lymphedema training courses. This list is offered to our members for reference only. Although we do interview/ review applications from each individual or facility, the NLN® is not responsible for quality of service or rates charged. You are encouraged to inquire about fees and verify coverage with your insurance company prior to the treatment and, as when making any medical decision, research your options, ask questions, then decide on the best course of treatment for you. For the Medical Advisory Committee's guidelines for choosing a therapist, refer to the Education Corner. Note: The Resource Guide includes only NLN sponsoring facilities/clinicians; each sponsor has submitted detailed information about their facility/practice including copies of licenses/certificates and paid a fee to be listed. This list does not represent all centers/clinicians currently in practice in the United States.

RESOURCE GUIDE LEGEND

The following codes appear in the Treatment Center and Manual Lymphatic Drainage Therapist listings. Codes indicate the school attended by each on-staff therapist. If school attended by a therapist is not an NLN-Sponsoring Training Course, only an asterisk (*) will appear in the listing, indicating that no information has been provided. See the Training Course column for program descriptions.

NOTE: The number preceding the code indicates number of therapists trained by the specified program.

- A = Academy Of Lymphatic Studies**
- B = Boris-Lasinski School, Casley-Smith U.S. Affiliate**
- C = Casley-Smith Training Program in Australia**
- D = Leduc Training Program**
- F = Földi School In Germany**
- G = (Guenter) Klose Norton Training and Consulting Course**
- H = Heat (Health Enhancement, Accessories & Training) Course**
- I = Lymph Drainage Therapy – Upledger Institute**
- LL = Lerner Lymphedema Services Academy**
- S = Lymphedema Therapy Center, Casley-Smith U.S. Affiliate**
- V = Vodder School Of North America**

SPECIAL NOTE: Therapists indicated with an "L" were trained by the Academy of Lymphatic Studies during its affiliation with Lerner Lymphedema Services (1996-99).

TRAINING PROGRAM LEGEND

Program Codes

(Indicate what is covered in the program)

C = Complete Program (Manual Lymph Drainage, bandaging, garment review, exercise, diet/nutrition, skin care)

P = Use of pumps reviewed

A = Additional types of compression garments/devices reviewed

Student Codes

(Indicate who is eligible to attend the course)

D = Doctors (M.D.)

N = Nurses

P = Physical Therapists

O = Occupational Therapists

M = Massage Therapists

(Note: Massage therapists should contact the school for minimum practical hours and experience required to attend this course.)

Lymphedema Therapists Training Programs

Academy of Lymphatic Studies [A]

Home Office: Sebastian, FL
 Telephone: 800-863-5935
 Director: Joachim E. Zuther, CI
 Course Length: 135 hours(+), 14 days
 Classes Held: Across the U.S.
 Student Codes: D, N, P, O, M + PTAs
 Program Codes: C, P, A

The Casley-Smith School [C]

Home Office: Adelaide, SA Australia
 Telephone: From U.S.
 011-61-8-8271-2198
 Fax: 011-61-8-8271-8776
 Director: Judith Casley-Smith,
 PhD, MD (hc)
 Course Length: 90 hours, 14 days
 Student Codes: D, N, P, O, M
 Program Codes: C, P, A

CASLEY-SMITH COURSES IN THE UNITED STATES

1) Lymphedema Therapy Center [S]

Home Office: Roswell, GA
 Telephone: 770-518-4700
 Fax: 770-552-6633
 Director: Decourcy Squire, PT, CLT
 Course Length: 135 hours, 14 days
 Classes Held: Across the U.S.
 Student Codes: D, N, P, O, M
 Program Codes: C, P, A

2) Boris-Lasinski School [B]

Home Office: Woodbury, Long Is., NY
 Telephone: 516-364-2200
 Fax: 516-364-1844
 Director: Marvin Boris, MD
 Course Length: 120 hours, 12 days
 Classes Held: Woodbury, Long Isl. NY
 Student Codes: D, N, P, O, M (+PTA)
 Program Codes: C, P, A

Coast to Coast School of Lymphedema Management Leduc Method [D]

Home Office: Temecula, CA
 Telephone: 909-600-0634
 Director: Anne-Marie
 Vaillant-Newman, PT
 Course Length: 48 hours, 6 days
 Student Codes: D, P, O
 Program Codes: C, P

The Földi School – Privateschule Földi GmbH [F]

Home Office: Merzhausen, Germany
 Telephone: From U.S.
 011-49-761-406921
 Fax: 011-49-761-406983
 Director: Prof. Michael Földi, MD
 Course Length: 160 hours, 20 days
 Student Codes: D, P, M
 Program Code: C

(Guenter) Klose Norton Training & Consulting, Inc. [G]

Home Office: Red Bank, NJ
 Telephone: 877-842-4414
 Director: Guenter Klose, MLD/
 CDT/CI
 Medical Director: Lawrence N. Sampson, MD
 Course Length: 125 Hours, 13 days
 Classes Held: Across the U.S.
 Student Codes: D, N, P, O, M
 Program Codes: C, P, A

Health Enhancement, Accessories & Training, Inc. (H.E.A.T.) [H]

Home Office: Calistoga, CA
 Telephone: 707-942-6633
 Director: Reinhard Bergel, PhD
 Course Length: 100 hours, 10 days
 Class Held: Across the U.S.
 Student Codes: D, N, P, O, M & PTAs
 Program Codes: C, P

Lymph Drainage Therapy – Upledger Institute [I]

Home Office: West Palm Beach, FL
 Telephone: 800-311-9204 x92008
 Fax: 561-622-4771
 Directors: Bruno Chikly, MD
 Renee Romero, RN
 Course Length: 170 hours, 22 days
 Classes Held: Across U.S. & Canada
 Student Codes: D, N, P, O, M
 Program Codes: C, A