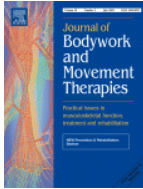




ELSEVIER

Journal of Bodywork and Movement Therapies

[Volume 14, Issue 3](#), July 2010, Pages 255-261



Fascia Research: Visceral Adhesions

Notes on visceral adhesions as fascial pathology

Author links open overlay panel [Gil Hedley](#) Show more

<https://doi.org/10.1016/j.jbmt.2009.10.005>

[Get rights and content](#)

Summary

[Fascia](#) is introduced as an organizing anatomical category for visceral [mesothelia](#).

Normal [tissue](#) relations are discussed in order to frame the presentation of abnormal visceral adhesions as fascial pathology, 4 types of which are identified. Laboratory [dissections](#) of fixed and unembalmed human [cadavers](#) provide the [basis](#) for [insights](#) into these pathologies as regards [self-care](#) and [therapeutic](#) technique.

Copyright © 2010 Elsevier Ltd. All rights reserved.

Outline

1. [Summary](#)
2. Intent
3. Anatomical background
4. Normal adhesion of the parietal layer to the fibrous layer
5. Normal adhesion of the visceral layer to the viscera
6. Normal relations of parietal and visceral layers to each other
7. Normal sliding surfaces
8. Definition of pathological adhesion
9. Adhesion distinguished from ligamentous distortion
10. Types of pathological adhesion by cause
11. Inflammation from infections or other types of disease processes
12. Inflammation and scarring as the sequelae of surgical intervention
13. The sequelae of prior limitations upon movement cycles
14. Intentional therapeutic adhesion
15. Varying impact of adhesions
16. Palpating for adhesions
17. Direct vs indirect approaches to releasing adhesions
18. Hypothetical examples of indirect release of adhesions *in vivo*
19. Self-care example
20. Practitioner-supported example
21. References

Figures (9)

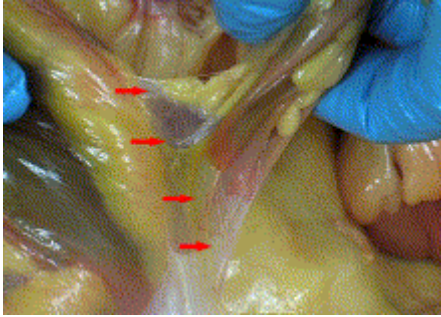


1.

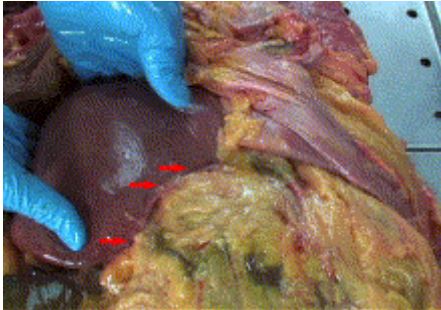


2.

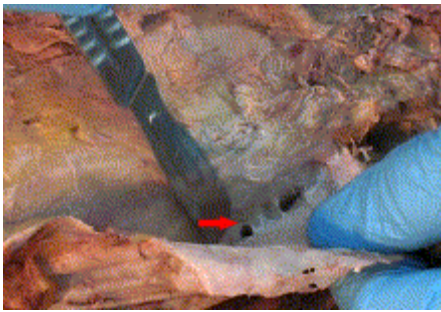
3.



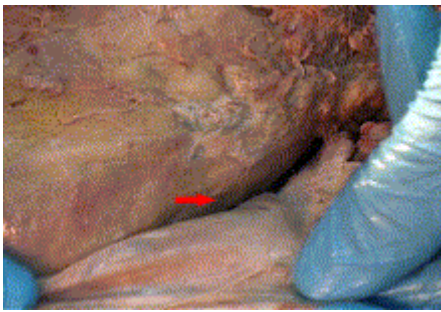
4.



5.



6.



Show all figures

Tables (2)

1. Table 1
2. Table 2